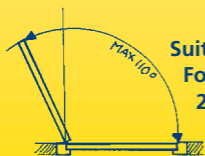


Finger Alert

2 door-strips

1 strip for the outer side of the door
1 strip for the inner side of the door

To prevent fingers of children, up to 4 years old, from being pinched in the door



Suitable for both sides of the door.
For doors with a thickness of up to 2 inches only.

A door with Finger Alert strips can open up to 110°.

Please read these instructions carefully before installing the strips:

Warning: Strips are to be used indoors only. Finger Alert is not responsible for strips used outdoors or on external doors.

A. Installation of the wide strip for the side where the hinges are not visible when the door is closed.

Step 1. Open the door and thoroughly clean and dry the door and frame, ensuring that no grease or other residues remain. (See Drawing #1)

Step 2. Close the door. Lightly draw with a pencil two vertical lines, one on the door exactly 1.4 inches from the corner, and one on the door frame exactly 2 inches from the corner, up to a height of 4 ft from the floor. (See Drawing #2)

Step 3. Open the door at exactly 45 degrees and remove the protective paper from one adhesive strip. Attach the adhesive strip to the doorframe just inside the guideline, ensuring that the bottom of the strip is no more than 0.2 inches above the floor. Remove the protective paper from the second adhesive strip and attach it to the door. (See Drawing #3a and #3b)

- The strips can also be nailed or screwed into place through the grooves in the edging strips. If the door or doorframe has water-based paint the strips must be screwed or nailed into place.
- If used in children's day care centers, crèches or play centers the strips should be screwed or nailed into place every 7.5 inches.

Step 4. To ensure correct adhesion, rub your fingers firmly up and down the adhesive strips for 2 minutes. Then close the door and do not open for at least 15 minutes.

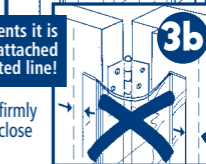
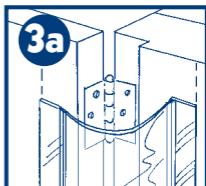
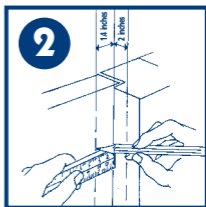
If the above installation instructions of placement of strips at 1.4 inches and 2 inches from the corner of the door are not followed properly, a gap may result making the strips less effective, which may result in an accident.

B. Installation of the smaller strip for the side where the hinges are visible when the door is closed.

Once the wide strip has been installed pursuant to the above instructions and that the door has been closed for at least 15 minutes, the smaller strip can be installed as per the following steps:

Step 1. Clean the door and the doorframe as described in Step 1 of Section A.

Step 2. Close the door and lightly draw with a pencil 2 vertical lines exactly 0.8 inches to the left and right of the hinge (one on the door and one on the door post). This will ensure that the strip is in the correct position when attached. Then follow Steps 3 and 4 of Section A above.



To avoid all accidents it is important that the strip is attached exactly on the indicated line!



Keep these instructions for future reference!

CAUTION

- Do not open doors fitted with Finger Alert Strips more than 110°. Install door stoppers if necessary to avoid damage to the door and doorframe. If the door is opened more than 110°, the strips are likely to tear off from the door.
- Check the strips to ensure continued strong adhesion regularly, at a minimum of every 3 months beginning the third month after installation.
- removing the adhesive strips may cause damage to surface finishes and paintwork. To prevent damage, the strips must be pulled off carefully, lengthwise, at a 90° angle from the door.

DISCLAIMER

Arte Viva BV shall not be responsible for any consequential, direct or indirect loss or damage suffered by any person or property, which are the result of a failure to install and/or use the strips as set forth in the above instructions, or based upon misuse, neglect or modification of the Finger Alert strips.



The Finger Alert door strips shall not constitute a substitute for proper adult supervision.

